

## AUTUMN WEEK-END RE-UNIONS, 1956

Week-end Re-unions of friends who have met at our various guest-houses during the season will be held at Matlock on the dates given below. The Host and Hostess will arrange Social evenings with games, singing and dancing.

- Oct. 20—Scaford, Glyn Garth  
.. 27—North Berwick, Matlock, Penmacmawr  
Nov. 3—Folkestone, Ardentinny.  
.. 10—Kingswear, Hornsea  
.. 17—Windermere, Ventnor

A SOCIAL WEEK-END will be held at our London house for all friends from November 2nd to 5th.

### SOCIAL AND RE-UNION WEEK-END CHARGES

From Friday evening Dinner to Sunday Tea	40/- incl.
From Saturday High Tea to Monday Breakfast	36/- ..
From Saturday High Tea to Sunday Afternoon Tea	25/- ..
Other periods in proportion	

Bookings should be sent in the usual way to Head Office accompanied by a deposit of 10/- each, stating the exact period you wish to stay. Bookings accepted from Friday to Monday or other periods. If you are unable to take the week-end arranged for your particular Centre, you will be welcome to join any other re-union party.

### F.H.A. RAMBLING AND SOCIAL CLUB RE-UNIONS

#### London Social

Saturday, 21st January, 1956, The Mary Sumner Hall, Tufton St., S.W.1. 6-0 p.m. to 11-0 p.m. Tickets 4/- from the Secretary. Host & Hostess, Mr. & Mrs. F. C. Jones.

#### Manchester Social and Dance

Saturday, 17th March, 1956, in the Great Hall, College of Technology, Manchester (corner of Whitworth St. and Sackville St.), 6-30 p.m. to 10-30 p.m. Tickets 4/- (including light refreshments), from the Secretary. Good Band in attendance.

#### Leeds Social and Dance

Saturday, February 25th, 1956, at the Y.W.C.A., Cookridge St., 6-0 p.m. to 10-0 p.m. Tickets 3/6 (including light refreshments), from Secretary, Beechwood Court, Harrogate, all applications for Social Tickets should include remittance and stamped addressed envelope for reply.

#### Leicester Re-union

Saturday, 28th January, 1956, at Emmanuel Schoolrooms, Leamington St., Leicester, 6-30 p.m. to 10-0 p.m. Tickets 3/- each (including light refreshments) from Secretary.

## Friendship Holidays Association



SUMMER  
HOLIDAYS

## GENERAL NOTES

At all our Centres, guests are asked to assist in maintaining the atmosphere of friendliness, which is one of the principal features of our guest-houses. Games, dancing and impromptu concerts are arranged in the evenings and the Host or Hostess will welcome volunteers to play and sing. Bring your music with you. Whist Drives also arranged.

**EXCURSIONS**—At all Centres, coach, steamer and walking excursions are organised throughout the season—i.e. from Whitsuntide; also at Christmas and Easter—usually on four days a week, and led by the Leader in residence at the Centre. Care has been taken to arrange that they shall cover the most interesting and beautiful parts of the surrounding district. Excursions are optional at all Centres. Guests who wish to take mountain excursions are advised to bring strong, comfortable footwear. Excursion charges usually cover all expenses, entrance fees and the cost of cafe meals (luncheons and teas) where these are taken as part of the official excursion and when it is not convenient to provide packed sandwiches. Tips to drivers are *not included*. Guests may have separate packed lunches on request if not joining the official excursion party or may have a light lunch and tea in the house.

Our charges include all meals and evening refreshments in the house. All weeks begin with Saturday high tea and end with the following Saturday breakfast. Guests staying two consecutive weeks are provided with dinner on the middle Saturday. Extras: Single bedrooms, 1/6 per night (which must be arranged for on booking), Staff gratuities and Excursions taken.

For particulars of Harrogate and London see separate pages. These two Centres are run as hotels. This is a little different from the guest-houses.

**MEALS**—Breakfast usually at 8-45 a.m., lunch and afternoon tea, indoors or in the open; dinner usually at 7 p.m., except on Saturdays and Sundays, when it is 1 o'clock. Refreshments served about 9-45 p.m. Our houses close at 11 p.m.

**GRATUITIES**—Rather than have gifts to individual members of the staff we are asking guests to give 2/6 each per week to be divided equally.

**F.I.A. BADGES** may be obtained from Head Office. Price 2/- each, plus 2½d. postage, or at the Centre.

**ACCOMMODATION**—Guests are expected to share bedrooms, and groups of friends coming together should notify this on booking, with a view to the allocation of rooms. Single beds provided. Spring interior mattresses in most rooms.

For double-bedded rooms, and rooms with two single beds, married couples have the preference.

Married couples willing to occupy separate sleeping quarters in the event of all the married quarters accommodation having been already booked, should state this on their booking form. We are often able in these circumstances to accept applications which otherwise we should be compelled to decline.

**DOGS**—We wish to remind our friends that we cannot accept dogs or other pets in our guest-houses.

(continued on back cover

## GENERAL NOTES—continued

**NO LEADER** is authorised to lead an excursion, or an extension of an excursion, other than those appearing in the Centre Programme.

**BOATING**—Persons are accepted as members of the holiday only on condition that they will not indulge in boating except they be accompanied by a licensed boatman and in a licensed boat.

**PARKING OF CARS** accepted only at owner's risk.

**INTOXICANTS**—No intoxicants are permitted in any of our guest-houses, and guests are requested to refrain from their use on excursions, etc.

Guests are asked if possible not to arrive at the Centres before 3 p.m. on Saturdays, but must advise the Manageress if unable to arrive before 10 p.m. No meals served after 9 p.m.

**LUGGAGE**—Guests are asked to bring as little luggage as possible, preferably bags and suitcases and not large trunks. There are no facilities for handling heavy luggage at the Centres.

**THE ASSOCIATION** reserves the right to cancel or alter any of the arrangements or charges set forth in this syllabus should they think it necessary.

**THE ASSOCIATION** will accept no responsibility for any loss or damage to the person or property of any of its guests, and reserves the right to cancel any holiday, should necessity arise through strikes, lock-outs, national crisis, or from any cause. In the event of such cancellation by the Association, any deposit paid by intending guests will be refunded in full, and the liability of the Association will then cease.

**ANY RAMBLING OR SOCIAL CLUBS** wishing to book week-end parties should make arrangements early.

**CONFERENCE PARTIES** will be welcomed in the off season. Please apply for further details to Head Office.

**OFFICIALS**—We are requiring Centre Leaders, Hosts and Hostesses during the early and late part of the season, and will welcome offers of help in this way, preferably from those with previous experience.

**STAFFING**—We are requiring good cooks and house helpers at all Centres for Easter and the Season. If you know of anyone who would care to assist in this way for any period please write to Head Office and full particulars will be sent to them.

**MEMBERSHIP**—Guests who stay at our houses for one complete week automatically become members. There is no membership fee.

### F.I.A. RAMBLING AND SOCIAL CLUB SECRETARIES

Manchester Miss E. Woods, 23 Highfield Road, Chorlton-cum-Hardy, Manchester 21.

London Miss M. Harrison, 2 Glenmore Road, N.W.3.

Liverpool Miss M. Critchley, 17 Penally Way, Liverpool 6.

Leicester Mr. W. Butler, 173 Catherine Street, Leicester.

Huddersfield Mr. A. Pollitt, 45 Lee Street, Brighouse, Yorks.

### BOOKING ARRANGEMENTS FOR BRITISH CENTRES

Please read carefully before booking

ENTRIES AND ENQUIRIES, which should be accompanied by a stamped addressed envelope, should be addressed as follows:

BOOKING SECRETARY,  
F.H.A., BEECHWOOD COURT,  
HARROGATE, YORKS.

and not to any individual Centre or person.

A DEPOSIT of thirty shillings should be sent for a booking for Easter, Christmas and Season for each person each week (or ten shillings for a Re-union week-end) with the application form. This will be part payment. The balance is payable on arrival at the centre, or to Head Office three weeks before the holiday is due. It would save considerable financial work at the Centres if guests would forward balance of board payments to Head Office. In the event of unavoidable cancellation, any balance payment made would be returned in full.

PAYMENT FOR EXCURSIONS and gratuities to be made at the Centre.

REMITTANCES—Postal orders, money orders and cheques should be crossed and made payable to the Friendship Holidays Limited. Treasury notes should be registered. Counterfoils should be kept.

A TRANSFER FEE of 2/6 will be charged on all bookings transferred from one Centre or date to another Centre or date, or from one person to another. Postal order and deposit receipt must be sent with all transfer applications.

REFUNDS—If for any reason you are unable to take the holiday and give notice of cancellation 28 days before you had arranged to join the party, 10/- per head for each week will be deducted from the deposit paid. If less than 28 days notice is received the deposit will be retained as accommodation will have been reserved.

IMPORTANT—Guests are asked to bring their own soap and towels.

BOARD REFUNDS—No refunds will be made for meals or accommodation not taken, after being booked, nor for excursions or part of excursions not completed after being booked.

DIET—We do not cater for Vegetarians or anyone requiring special diet.

BOOKINGS can be accepted from January 2nd for all Centres.

BOOKINGS for complete weeks from Saturday to Saturday only, accepted between June 16th and September 1st except at Harrogate and London.

CHILDREN under 14 years of age cannot be accepted at any of the Centres during July, August and September, Easter or Christmas, except at Matlock, London and Harrogate and between May 19th and June 16th at Hornsea. We cannot accept children under 7 years of age at any time. Reduced charges for children when accepted on application.

CHRISTMAS BOOKINGS for seven days can be accepted now. Christmas bookings for minimum period can be accepted from June 1st. We can make no refund for those who book a full week and later alter this arrangement. Christmas parties to be held at Folkestone, Glyn Garth, Hornsea, Harrogate, Seaford, Matlock, London and Windermere.

The Thirty-Fifth Series of Holidays organised by the

# F H A

## FRIENDSHIP HOLIDAYS ASSOCIATION

(Friendship Holidays Limited)

MOUNTAIN, MOOR AND SEA

Founder: HENRY C. WHITE

#### Directors

Hy. C. WHITE  
M. WHITE  
D. WHITE  
M. BUTLER  
F. E. GRAY



#### Hon. Advisory Committee

G. F. BUTLER,  
B.Sc., A.Inst.P.  
H. E. HOLMES, M.P.  
B. HUNTER  
W. ROYLE  
Ald. F. WILSON,  
O.B.E., J.P.  
E. WOODS

#### F.H.A. HEADQUARTERS

Beechwood Court  
HARROGATE - YORKS

(Telephone 3386)

#### Guest Houses at

ANGLESEY	KINGSWEAR	PENMAENMAWR
ARDENTINNY	LONDON	SEAFORD BAY
FOLKESTONE	MATLOCK	VENTNOR
HARROGATE	NORTH BERWICK	WINDERMERE
HORNSEA		THE CONTINENT

Secretary .. D. White

Organiser .. F. Clare

Financial Secretary .. M. Grant

Bankers .. MIDLAND BANK LTD.

Auditors .. R. H. B. HEAP & SON, Bradford



"LANGHAM COURT"

NEW  
CENTRE  
FOR  
1956

**Seaford Bay** Langham Court is situated close to Seaford Head, which is National Trust property, and about five minutes' walk from the promenade, has wonderful sea views from all windows and lovely lawns and gardens where one can rest and relax in the sunshine.

Seaford has a very fine promenade nearly three miles long, also tennis courts, bowling greens, putting and golf course, and is ideal for bathing, which is quite safe. The air is most invigorating and the record for hours of sunshine has been the highest in the country. The walks over the Downs are delightful and quite easy. The house will accommodate 90 guests and has large public rooms including a dance room, billiards and table tennis room. The Bedrooms are equipped with interior spring mattresses and there are numerous bathrooms available.

OPEN: Whitsuntide, May 19, onwards.

POSTAL ADDRESS: F.H.A.,  
Langham Court, Seaford, Sussex.

CHARGES: £7/0/0 per week.



Optional Excursions will be arranged from the following: BEACHY HEAD, HURLING GAP, EASTBOURNE, ARUNDEL CASTLE, BRIGHTON, LITTLEHAMPTON, HINDOVER, LULLINGTON, WANNOCK GARDENS, LITTLINGTON, EXCEAT, BATTLE ABBEY, HASTINGS, PEVENSEY, ALFRISTON, LEWES.

Approximate cost: 42/- per week.

Day trips can be arranged from Newhaven to Dieppe from this centre

## St. Johann Austrian Tyrol HOTEL ZUM BAREN

Surrounded by the towering ranges of the Kitzbuhel Alps and the Majestic Wilde Kaiser Mountains, the Tyrolean village of St. Johann is an ideal centre for walks and excursions in magnificent Alpine scenery. It offers all the attractions to the holiday-maker, from ancient churches and castles to traditional Tyrolean dances and festivals.

Guests will be accommodated at the Hotel zum Baren, a charming old inn in the centre of the little town.

### Tour No. C.8

15 days/12 nights ... £27/14/6  
including 2nd class travel by special train via Short Sea Route and Innsbruck.

Supplement for 1st class travel ... £7/17/0

Departures: Sunday mornings, May 20, June 3, 17, July 1, 15, 29, August 12, 26, September 9.

### Optional Excursions

1. The Alpine village of Lofer 4/6. 2. Kitzbuhel 2/-. 3. Salzburg 12/6. 4. Round the Kaisergebirge, visiting the Walchsee, Kossen and Kufstein 9/6.

## Solstrand Norway HOTEL SOLSTRAND

Solstrand, on the Bjornefjord, is a delightful summer resort, about an hour's ride from Bergen. Across the fjord, the Hardanger Mountains and the Folgefonna Glacier present a scene that is typically Norwegian in its rugged splendour.

The Solstrand Hotel stands in a beautiful garden extending down to the beach. This centre offers opportunities for bathing, rowing, fishing and tennis, in addition to very fine coach and boat excursions. Bathing is excellent but bathing shoes are necessary. There is dance-music every evening, tennis and badminton courts, rowing-boats, sea and lake fishing.

### Tour No. C.95

Departures	Price from Newcastle
May 26—15 days/12 nights ...	£29/19/6
June 9, 23, July 7, 21, Aug. 4—15 days/12 nights ...	£37/11/6
Aug. 20—13 days/10 nights ...	£27/18/6

### Optional Excursions

1. By bus to Hop (the home of Grieg), the famous Stave Church at Fankelt and the ruins of the Lyssekloster Monastery. 2. By water-bus on the Samnangerfjord to Tyse. 3. By coach to Norheimsund on the Hardangerfjord. 4. By motor-boat to Sundal, on the Maurangerfjord, and the Dondhus Glacier. 5. By bus, train and steamer through wild majestic scenery to Flaam, on the Sognefjord, thence by spiral railway to Myrdal (the finest excursion in Western Norway).

From London: Those joining the tour in London will pay a supplement of £4/9/8 to cover 3rd class return travel to Tyne Commission Quay and reserved seats.





## El Estartit

The Costa Brava

### HOTEL FONDA MONTSERRAT

El Estartit is a small unspoiled fishing village nestling at the foot of the pine-clad hills of the Costa Brava, the picturesque and rugged coast that extends from the Franco-Spanish border towards Barcelona.

It possesses one of the finest beaches in this part of Spain, its beautiful sands stretching for several miles. The sardine boats which lend so much quaint charm to the beach by day, as they lie dotted along the shore, present an even more attractive picture when they put out to sea at night, each with a lighted lamp at its prow to attract the fish into the nets.

The Hotel Montserrat, right by the beach, facing the rocky Medas Islands, is a typical local inn; simple but comfortable. This inexpensive resort has been selected because of its splendid position and because it brings a visit to the Costa Brava well within the reach of most people.

#### Tour No. C.99

15 days/12 nights ..... £29/18/6  
 including 2nd class travel by Special Train via Newhaven/  
 Dieppe and Port Bou.  
 Supplement for 1st class travel ..... £7/5/0  
 Departures: Sundays, May 20, June 3, 17, July 1, 15, 29,  
 August 12, 26, September 9, 23. (Back in  
 London on Sunday evenings a fortnight later).

#### Excursions included in the Price

1. Torroella de Montgri.
2. The old town of Gerona and Banolas.

#### Optional Excursions

1. Palafrugell and the lighthouse of San Sebastian.
2. La Escala and Ampurias.
3. Barcelona.



OUR OWN PRIVATE PROMENADE AT BEACH COURT

## Folkestone

Folkestone has everything that any one could offer for the perfect holiday. The famous Leas, pine clad slopes that go down to the water's edge, refreshing air, stately cliffs, glorious gardens, the North Downs, sub-tropical plants flourish everywhere. It has one of the finest promenades and a concert hall to seat 2,000 people for the greatest celebrities of the musical world. Theatre, Repertory pavilion, sports grounds and tennis courts. Our house, Beach Court, is right on the sea shore, with our own private promenade. We cater for 120 guests. Hot and cold water in most bedrooms.

OPEN: Whitsuntide, May 19 to Oct. 6, and Christmas.

POSTAL ADDRESS: "Beach Court," Sandgate, Folkestone

TELEPHONE: Folkestone 78516

CHARGES: May 19—June 29 £7/0/0 per week  
 June 30—Sept. 7 £7/7/0 per week  
 Sept. 8—Oct. 6 £7/0/0 per week

Optional Excursions will be arranged from the following:  
 WINCHELSEA, RYE, HASTINGS, FAIRLIGHT, DOVER,  
 SHAKESPEARE'S CLIFF, HYTHE, DYMCHURCH, WALMER,  
 NEW ROMNEY, ST. MARGARET'S BAY, DEAL, LYMPNE,  
 CANTERBURY, TUNBRIDGE WELLS, RAMSGATE.

Approximate cost 40/- per week

Day trips can be arranged from Folkestone to Boulogne



"GRANVILLE COURT"

## Hornsea

*by the sea*

Hornsea, already known to thousands as "Lakeland by the Sea," has also unique and natural attractions, including the advantages of the largest fresh water lake in Yorkshire, which brings to the seaside the additional charm of beautiful lakeland scenery. Granville Court has accommodation for 120 guests. The house is on the promenade, and is the most important building in Hornsea. It contains a large number of single bedrooms, central heating, hot and cold water in all bedrooms. Also Sun Verandah, billiards room, table tennis, and one of the finest ballrooms on the East Coast for dancing. Boating, bathing, golf, public tennis courts.

POSTAL ADDRESS: "Granville Court," Hornsea, E. Yorks.

TELEPHONE: Hornsea 148 Free car parking facilities

OPEN: Easter: March 29 to April 5; then  
Whitsuntide: May 19 to Oct. 6, and Christmas.

CHARGES: Easter 22/- per day (4 days minimum)

Season	May 19—June 29	£7/0/0 per week
	June 30—Sept. 7	£7/7/0 per week
	Sept. 8—Oct. 6	£7/0/0 per week

This house is available for Conference Parties in the off season

Optional Excursions will be arranged from the following:  
HORNSEA MERE, MAPLETON, BEVERLEY MINSTER, SLEDMERE, RUDSTON (ROMAN REMAINS), FORGE VALLEY, SCARBOROUGH, FLAMBOROUGH HEAD, WHITBY, YORK, KIRKHAM ABBEY, DRIFFIELD, FILEY, BRIDLINGTON, RIEVAULX ABBEY.

Approximate cost 40/- per week



## Montreux

*Lake of Geneva*

HOTEL PENSION RIANT CHATEAU

The Lakeside resort of Montreux is situated in the loveliest part of French-speaking Switzerland, where the high mountains slope down to the shores of Lake Geneva. Here, one may combine the pleasures of lake and mountain trips in the daytime with an evening at a dance or a visit to the casino, concert or cinema.

The Pension Riant Chateau is a high class pension managed by a charming English-speaking Swiss lady. It is situated near the lake at Territet and commands magnificent views of the Alps and the lake.

Tour No. C.123

15 days/12 nights	£33/15/0
including 2nd class travel by Special Train via Short Sea Route and Basle or Delle.	
Supplement for 1st class travel	£6/6/0
Departures: Sunday afternoons, March 30 (for Easter), May 6, 20, June 3, 17, July 1, 15, 29, August 12, 26, September 9.	

### Optional Excursions

1. Castle of Chillon .. .. . 3/-
2. By mountain-railway to the Rochers de Naye .. .. . 10/6
3. By steamer to St. Gingolph, on the French side of Lake Geneva .. .. . 3/-
4. By train to Geneva .. .. . 11/6
5. By rail to Gstaad and chair-lift to the Wasseraigrat .. .. . 28/-
6. By rail and post bus to the Grand St. Bernard Pass .. .. . 25/-
7. By coach to Villeneuve, Aigle, Villars and Bex .. .. . 16/6

## The Bavarian Highlands

Oberammergau

HAUS MUHLBARTL

Oberammergau is a picturesque summer resort situated in a sunny valley amidst the peaks of Ammergauer Alps with the Zugspitze to be seen in the background. It is famous for its passion play, which will next take place in 1960.

Local attractions include the beautiful open-air swimming pool surrounded by lawns, the finest in Bavaria, the passion play theatre and the Kurgarten with its concerts, cinema and "dancings." A varied selection of wonderful excursions both on foot and by bus or coach is offered.

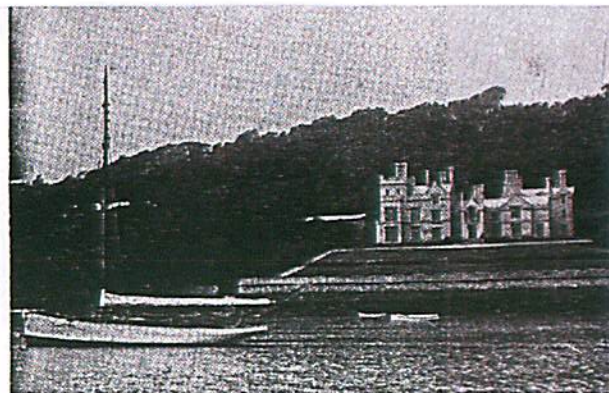
Our centre, the Haus Muhlbartl, is a guest-house situated in a large garden. It has three lounges furnished in typical Bavarian style, and visitors will be given a friendly welcome by the proprietor, Leo Lang, and his family.

### Tour No. C.49

15 days/12 nights ..... £29/19/6  
including 2nd class travel by Special Train via Short Sea  
Route, Balc, Buchs and Innsbruck.  
Supplement for 1st class travel ..... £7/10/0  
Departures: May 27, June 10, 24, July 8, 22, August 5, 19,  
Sept. 2. (Sundays).

### Optional Excursions

The Castle of Linderhof  
The Castles of Nueschwanstein and Hohenschwangau  
Garmisch Partenkirchen  
Ascent of the Zugspitze by mountain railway  
Innsbruck  
Munich  
The Dolomites



"THE BISHOP'S PALACE," ANGLESEY

*Glyn Garth* Our guest house, "Bishop's Palace," formerly the official residence of the bishops of Bangor, stands on the southern shore of Anglesey, and commands magnificent views of the whole of the Snowdon range and the coast of North Wales from Great Ormes Head to Bangor. Accommodation for seventy guests. Hot and cold water in many bedrooms. It stands in beautiful grounds, and has a private promenade along the shores of the Menai Straits. Boating, bathing, dancing, table tennis. (Interior Spring Mattresses throughout).

OPEN: Easter: March 29 to April 5, then  
Whitsuntide: May 19 to Oct. 6, and Christmas

POSTAL ADDRESS: F.H.A., Glyn Garth, Menai Bridge,  
Anglesey

TELEPHONE: Glyn Garth 20 Free car parking facilities  
Garage 2/- per day

CHARGES: Easter 22/- per day (4 days minimum)

Season May 19—June 29 £7/0/0 per week

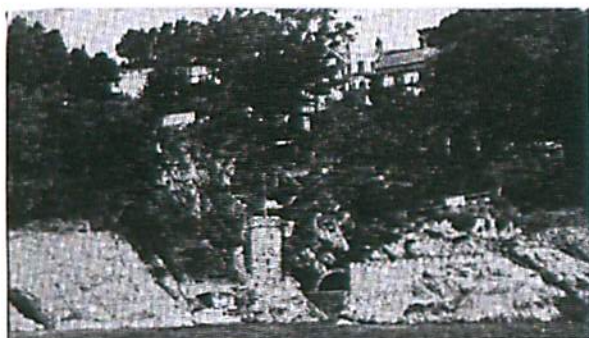
June 30—Sept. 7 £7/7/0 per week

Sept. 8—Oct. 6 £7/0/0 per week

(Extra accommodation for men only in the Garden House  
20/- per week less)

Optional Excursions will be arranged from the following:  
CAERNARVON, SNOWDON, LLANBERIS NANT FFRANCON  
PASS, BEDDGELERT, BENLLECH BAY, BEAUMARIS,  
PENMON POINT, BETTWS-Y-COED, LLANRWST, SWALLOW  
FALLS, LLANFAIRFECHAN, ABER FALLS, CEMAES BAY,  
BANGOR, RED WHARFE BAY, HOLYHEAD.

Approximate cost 42/- per week



"KINGSWEAR COURT" FACING THE SEA

## South Devon

**Kingswear** "Kingswear Court," next to Kingswear Castle, is situated in a sheltered cove of its own with lovely tropical plants and trees that go down to our own promenade and bathing jetty. At the mouth of the river Dart, opposite Dartmouth, which is one of the most interesting and picturesque old towns in the country and famed for its regatta, which is held at the end of August. Bathing, dancing, table tennis, boating. Accommodation for sixty guests. The house is a mile from Kingswear station

OPEN: June 16 to September 22

POSTAL ADDRESS: "Kingswear Court,"  
Kingswear, South Devon

TELEPHONE: Kingswear 348 Garage: 2/- per night

CHARGES: £7/0/0 per week

(Extra accommodation for men only in the Garden House  
20/- per week less)

Optional Excursions will be arranged from the following:  
TOTNES, RIVER DART, DITTISHAM, STOKE GABRIEL,  
BRIXHAM, BERRY HEAD, MANSANDS, PRINCETOWN,  
DARTMOOR, SALCOMBE SANDS, DARTMOUTH CASTLE,  
BLACKPOOL SANDS, KINGSBRIDGE, IVYBRIDGE,  
TORQUAY, BABBACOMBE, ODDICOMBE.

Approximate cost 45/- per week



## Dinard



HOTEL DE LA VALLEE

Dinard, the most popular resort on the Breton Coast, has so much to offer that it cannot fail to please. It is warm throughout the whole of the season and its three beaches of firm golden sand ensure magnificent bathing.

A varied programme of excursions awaits the visitor and there is entertainment of all kinds; cinemas, dancing, a casino, fishing, sailing, tennis, golf and riding.

The Hotel de la Vallee stands on the quayside near the Ecluse Beach.

### Tour No. C.32

Departures (via Southampton/St. Malo)	Price
Tuesday June 5 10 days/7 nights	£19/11/0
Tuesday June 18 10 days/7 nights	£19/11/0
Friday July 6 15 days/12 nights	£28/3/6
Friday July 6 15 days/12 nights	£31/19/6
Friday July 20 15 days/12 nights	£31/19/6
Friday Aug. 3 15 days/12 nights	£31/19/6
Friday Aug. 17 15 days/12 nights	£31/19/6
Friday Aug. 31 15 days/12 nights	£25/16/0
Supplement for 1st class steamer	£2/17/6

High Season Charge (July 1st—August 31st) 9/6 per day

### Optional Excursions

1. Mont St. Michel.
2. Cap Frehel and Sables-d'Or-Les-Pins.
3. Paimpol and the Isle of Brehat.
4. By motor-boat down the River Rance to Dinan.





*Lugano*  
Switzerland  
HOTEL FLORA

One of the largest and most popular of all Swiss resorts, Lugano, principal town of the Ticino, the Italian-speaking part of Switzerland, is a most picturesque spot in a beautiful setting, and every kind of holiday facility is to be found there. Because of its warm and sheltered climate, Lugano is specially suitable for spring and autumn holidays. It enjoys the longest season of any Swiss resort, and is favoured with abundant hours of sunshine. The Hotel Flora is ideally situated in the Paradiso, the better part of Lugano.

15 days/12 nights ..... £36/11/6  
including 2nd class travel by special train via the Short Sea Route and Bale.

Supplement for 1st class travel ..... £6/13/0  
Departures: Sundays, May 6, 20, June 3, 17, July 1, 15, 29.  
August 12, 26, September 9.

Air Price on request.

**Optional Excursions**

1. Locarno and Ascona. 2. Villa Carlotta, on Lake Como. 3. By mountain-railway to Monte Bre and Monte San Salvatore. 4. Over the Maloja Pass to St. Moritz. 5. Five Alpine Passes and the Rhone Glacier. 6. Stresa and the Borromean Islands on Lake Maggiore, Italy. 7. Milan.

*Sitges* Costa Brava, Spain

HOTEL SAN FRANCISCO

Only one hour from Barcelona, Sitges is a real gem. A list of its undoubted charms include quaint, narrow streets, flower-decked balconies, palm-trees, a beautiful sandy beach, a wide promenade, and Spanish-style bars and cafes with music and dancing. Accommodation will be in the attractive villa dependence of the Pension San Francisco, with garden and terrace, only a few minutes from the sea. Breakfast will be taken in the villa and lunch and dinner in the attractive garden restaurant of the Pension San Francisco itself.

**Tour No. C.106**

15 days/12 nights ..... £34/5/0  
including 2nd class travel by Special Train via the Short Sea Route, Paris, Port Bou and Barcelona.

Supplement for 1st class travel ..... £8/0/0  
By Air 13 days/12 nights ..... £53/14/6

Departures: By Rail — Sundays, May 13, 27, June 10, 24,  
July 8, 22, August 5, 19, September 2, 16.  
By Air — One day later than by Rail.

**Optional Excursions**

1. The famous "Pueblo Espanol" of Montjuich, where you can see arts and crafts and typical houses from all parts of Spain.  
2. The Heights of Tibidabo. 3. The Monastery of Montserrat.  
4. Tarragona.



"THE GLOUCESTER"

*London*

"The Gloucester," 134 Westbourne Terrace, W.2, is situated in the West End near to Hyde Park. Buses Nos. 7, 15, 27 and 36 pass the door, and the Underground runs from Paddington, which is three minutes' walk from the house. Large lounge, dining room and writing room. Spring interior mattresses in all bedrooms.

OPEN: All the year round

TELEPHONE: Paddington 7841

CHARGES: Bed and Breakfast:

All dates (excluding Christmas)

17/6 per head per night for Single and  
Double Rooms

15/6 per head per night for Sharing Rooms  
Evening Dinner 5/6 per head

Other meals may be ordered at the house at moderate charges

Note: All advance bookings should be sent to Head Office, Harrogate. Guests should complete the application form and forward a deposit of 10/- per head.

If accommodation is required at short notice this can be arranged by telephone direct to London.

Sightseeing Motor Coach Tours can be booked at the Hotel for KEW GARDENS, ROYAL PALACES, WINDSOR CASTLE, HAMPTON COURT, ETON, ST. PAUL'S, CITY OF LONDON, HOUSES OF PARLIAMENT, FAMOUS MUSEUMS, TOWER, WESTMINSTER ABBEY, OXFORD, STRATFORD-ON-AVON, ETC.



"CROMFORD COURT"

*Matlock* "Cromford Court" stands in wooded grounds of twenty-four acres. It is a large and commodious mansion, and occupies a magnificent position with extensive views of the river and valley of the Derwent. There is accommodation for ninety guests. Hot and cold water in many bedrooms. Dancing, table tennis, boating, public swimming pool and tennis courts.

Children from 7 years of age accepted during the Season.

OPEN: March onwards

CHARGES:  
Easter 22/- per day (4 days minimum)  
Season £6,0/0 per week



POSTAL ADDRESS: "Cromford Court," Matlock Bath,  
Derbyshire

TELEPHONE: Matlock 276 Garage: 2/- per night

Optional Excursions will be arranged from the following:  
BONSALL, WINSTER, VIA GELLIA, BUXTON, HADDON HALL, MILLERS DALE, ASHBOURNE, THORPE CLOUD, DOVE DALE, WINGFIELD MANOR, CRICH, LEA HURST, CROMFORD, BLACK ROCKS, WIRKSWORTH, CASTLETON, SPEEDWELL, AND BLUE JOHN MINES, EDALE, HOPE, GRINDLEFORD, HATHERSAGE, CHATSWORTH, MAM TOR, BAKEWELL, LATHKILL DALE.

Approximate cost 40/- per week

## Grand Coach Tour of Five European Countries

Belgium Luxembourg Germany Switzerland France  
Brussels, The Ardennes, The Black Forest, The Bernese Oberland,  
Paris and Bruges

Escorted throughout

- 1st day—Leave London by train for Dover; by steamer to Ostend and thence by coach to Brussels.
- 2nd day—Morning sightseeing tour of Brussels before departure by coach, via Namur, Dinant and the Forests of the Ardennes for the Grand Duchy of Luxembourg.
- 3rd day—Leave by coach, via Saverne and Strasbourg (visit the Cathedral) for St. Märgen in the Black Forest.
- 4th and 5th days—At leisure in St. Märgen with one included half-day drive and a visit to the famous clock museum at Furtwangen.
- 6th day—Leave by coach for Freiburg; thence to Basle, Berne (with break of journey in each city) and Spiez, on Lake Thun.
- 7th to 9th days—At leisure in Spiez, with one included coach drive along the shores of Lake Thun to Interlaken, Lauterbrunnen and the Alpine glacier village of Grindelwald. (Optional excursions can also be made to (1) the Blue Lake and Kandersteg, 12/6; and (2) by lake steamer to Thun, 3/6).
- 10th day—Leave Spiez by coach for Thun, Berne, Neuchatel, and through the Jura Mountains to Pontarlier, Dole, Auxonne and Dijon, the historic town in the famous vineyards of Burgundy.
- 11th day—Leave Dijon by coach for Avallon, Auxerre, Sens and the Forest of Fontainebleau and Paris.
- 12th day—Morning: sightseeing drive round Paris.  
Afternoon: at leisure in Paris.
- 13th day—Leave by coach for Arras, Lille and Bruges.  
Evening: cruise of the canals.
- 14th day—Late morning departure for Ostend by coach; thence by steamer for Dover, and train to London.

Tour No. C.133 £44/18/0

The coaches used for this tour are extremely modern and comfortable, with maximum visibility. There will be no allocation of seats at the time of booking as participants will be given the opportunity, under the guidance of the Courier, of changing places during the course of tour. This will ensure that everyone has a fair share of the front seats.

Departures: Sunday mornings, June 3, 17, July 1, 15, 29, August 12, 26, September 9.

Arriving back in London on Saturday evenings a fortnight later.

Optional supplements: 1st class on steamer £1/4/0.  
1st class rail and steamer £2/1/8.



Riviera dei fiori  
13 Diano Marina - Panotam

## Diano Marina Italian Riviera

### HOTEL PARADISO

As lovely as the sound of its name, Diano Marina stands on one of the curving bays of the Ligurian Riviera, between San Remo and Alassio.

With its fine sands, picturesque streets and the olives, pines and chestnut trees that clothe the hills behind the town, it is a most attractive little resort. Here, the holiday-maker may relax in the sunshine and enjoy the delights of perfect sea-bathing.

The Hotel Paradiso is on the sea-front.

#### Tour No. C.65

15 days/12 nights ..... £35/15/0  
including 2nd class travel by Special Train via the Short Sea Route, Paris and Ventimiglia.  
High season (July 1—September 10) supplement : 5/- per day  
Supplement for 1st class travel ..... £6/17/0  
Departures : Saturday afternoons, May 19, June 2, 16, 30,  
July 14, 28, August 11, 25, September 8, 22.

#### Optional Excursions

1. By bus to San Remo; 2. By bus to Alassio; 3. A magnificent coach drive along the coast into France, visiting Menton, Monte Carlo and Nice; 4. By coach up into the hills to Prati Piani; 5. By coach to Genoa and Portofino.



"TANTALLON HALL"

*North Berwick* "Tantallon Hall," on the cliffs at North Berwick, twenty-two miles from Edinburgh, and standing in its own grounds, is only five minutes' walk from the beach. The house can accommodate eighty guests. There is excellent bathing from the house. Dancing, boating, public tennis courts. Ideal for visiting Edinburgh Festival. Seaviews from all rooms. This centre is a golfers' paradise, being situated by the first tee of beautiful links towards Bass Rock.



OPEN : June 23 to Sept. 22

POSTAL ADDRESS : "Tantallon Hall,"  
North Berwick East Lothian

TELEPHONE : North Berwick 550 Garage : 2/- per night

CHARGES : £7/7/0 per week

#### Optional Excursions will be arranged from the following :

EDINBURGH, FORTH BRIDGE, HOLYROOD HOUSE,  
MELROSE, DRYBURGH, CANTY BAY, ABBOTSFORD, ST.  
ABBS HEAD, BASS ROCK, FIDRA, DIRLTON CASTLE,  
EYEMOUTH, THE TROSSACHS.

Approximate cost 45/- per week



"GLENFINART"

*Ardentinny* "Glenfinart House" one of our Scottish guest-houses, accommodating sixty-five guests, was once the home of the Douglas Clan. It stands in extensive grounds which extend to the shores of Loch Long. On three sides the mountains rise up and are a wonderful sight in the early summer and autumn with forests of rhododendron and heather. The excursions include coach, walking and steamer trips. Bathing, dancing, table tennis, boating, croquet. Ardentinny is in the midst of magnificent scenery, and fourteen miles from Dunoon. Some of the finest views of the Clyde are to be seen from here. Visits to the Highland Games Gathering, Yacht Racing, Oban and The Trossachs can be arranged on off days.

OPEN: June 16 to September 22

POSTAL ADDRESS: F.H.A., "Glenfinart House,"  
Ardentinny, by Dunoon, Argyll

TELEPHONE: Ardentinny 214 Free car parking facilities

CHARGES: £7/0/0 per week

Optional Excursions will be arranged from the following:  
CARRICK CASTLE, LOCH GOIL, LOCH ECK, LOCH FYNE,  
INVERARY, GLENDAROUEL, PORTINCAPEL, GARELOCH,  
ARROCHAR, BEN ARTHUR (THE COBBLER), LOCH LONG,  
LOCH LOMOND, WHISTLEFIELD, ARRAN, THE KYLES OF  
BUTE, GLEN LEAN, INVERVEGAN, LOCH STRIVEN,  
ROTHESAY.

Approximate cost 45/- per week



## Maderno Lake Garda

PENSION LA RAFFA

Maderno is a charming little resort on the shores of Lake Garda, the largest of the Italian Lakes, where lemon, olive and cypress trees grow on the mountain sides.

In addition to bathing, sunbathing and boating, the programme will include walks in the surrounding hills and excursions by motor-launch, steamer, coach and bus.

Our centre, the Pension La Raffa, is unpretentious but comfortable and its situated in the centre of the village. All rooms have running water.

### Tour No. C.72

15 days/12 nights ..... £31/18/6  
including 2nd class travel by Special Train via Short Sea  
Route, Bale, Chiasso and Milan.

Supplement for 1st class travel ..... £7/9/0  
Departures: Sundays, May 13, 27, June 10, 24, July 8, 22,  
August 5, 19, September 2, 16.

### Included Excursions

1. By motor launch to Gardone, with a visit to Vittoriale, d'Annunzio's national memorial.
2. By steamer to Sirmione, famous for its castles and grottoes.

### Optional Excursions

By steamer to: 1. Malcesine; 2. Riva. By bus to: 3. Brescia;  
4. Trento; 5. Verona. By coach to: 6. Madonna di Campiglio in  
the Dolomites.

## HOLIDAYS ABROAD

These Centres are all at comfortable hotels at resorts which have proved very popular in past seasons. Parties which will include other British guests, will be friendly and informal, and at most Centres there will be a resident representative.

**EXCURSIONS**—A programme, including all the most attractive excursions, has been planned for each Centre and details will be arranged by the resident representative in accordance with the wishes of visitors. Unless specially mentioned, the cost of excursions is not included in the price of the tour. In connection with Swiss Centres a special holiday ticket will be supplied which entitles the holder to a 50 per cent. reduction on a number of excursions.

**PRICES**—Prices shown include the new second class travel between London and destination, seat reservations (wherever possible), full board and accommodation, normal gratuities, taxes and the services of the representative. The transfer of passengers and luggage between station and hotel is included where possible. Meals en route, baths, afternoon teas and drinks are not included.

**ACCOMMODATION** will usually be arranged in two-bedded rooms, but a few single rooms will be available for those who specially require them, at an additional charge of 2/- to 4/6 per night.

**CURRENCY & PASSPORTS**—Foreign currency and travellers' cheques can be arranged for you. The basic allowance for the year ending October 31st, 1956, is £100 per person. This allowance has to be reduced by the cost of the hotel accommodation and other services abroad (this reduction is known as the V form amount and those booking will be notified of the exact amount applicable to the tour in question). What is left—in most cases between £70 and £80—is the maximum available for the purchase of travellers' cheques and foreign currency to cover personal expenses abroad. Passports are necessary, and in some cases visas may be required. These can be arranged for you. Details will be sent to those booking.

**BOOKINGS** are accepted on payment of £3 deposit and should be sent to the F.H.A. Foreign Travel Department, Head Office, Harrogate, Yorks. The balance of the cost will be payable at least ten days before departure. If you should have to cancel after having paid the balance, the amount will be refunded, less the £3 deposit. For conditions of booking, see back of Continental Booking Form.

**NEW TRAVEL SYSTEM**—On 3rd June, 1956, all Continental and British Railways, with the exception of the Spanish, will adopt the Two-Class System. This means that on and from that date, there will be only two classes—1st and 2nd. The tariff for 2nd class travel will then be approximately the same as the present 3rd class fares, and the 1st class fare will be, in most cases, roughly comparable to the old 2nd class fare. The new 1st class fare will therefore be much less than the present 1st class fare. All quotations in this programme, except where otherwise noted, are based on the new tariffs. Every effort will be made, we are assured by the Railways, to bring into being the new stock as soon as possible, especially on the long-distance trains, but a certain amount of give and take will be necessary in the early stages after the 3rd June.

**OTHER HOLIDAY ARRANGEMENTS** can be made in all Continental Centres and further afield, etc. Further details will gladly be sent on request. Children can be accepted for Continental Centres. Travel by air can also be arranged for any of these Continental tours.



"STEEPHILL CASTLE"

## Ventnor

"Steephill Castle" is delightfully situated in ten acres of well-wooded grounds facing the sea, and can accommodate seventy guests. Few stretches of the holiday coast offer as much allurements to the visitor and health seeker as that which fronts the English Channel of the southern seaboard of the Isle of Wight. Nature has endowed the whole district with scenery incomparable in the British Isles. The temperature is equable, sunshine is abundant. There are charming little bays. The Castle has spacious lounges and dance hall, and is five minutes from Steephill Cove, ideal for bathing and boating. Dancing, table tennis.

OPEN: June 2 to October 6

POSTAL ADDRESS: "Steephill Castle," Ventnor, I.O.W.

TELEPHONE: Ventnor 498

CHARGES: June 2—June 29 £7/0/0 per week  
June 30—Sept. 7 £7/7/0 per week  
Sept. 8—Oct. 6 £7/0/0 per week

(Extra accommodation for men only in the Garden House 20/- per week less)

Optional Excursions will be arranged from the following:  
BEMBRIDGE, SEAVIEW, ST. HELENS, WROXALL, GODSHILL, CARISBROOKE CASTLE, BONCHURCH, BLACKGANG CHINE, WHIPPINGHAM, COWES, OSBORNE HOUSE, SHANKLIN, TOUR OF THE ISLAND, THE NEEDLES, RYDE, CULVER CLIFF, ST. CATHERINE'S POINT, NITON, TOTLAND BAY, ALUM BAY.

Approximate cost 40/- per week





"CHAPEL RIDDING"

**Windermere** "Chapel Ridding" is our Lakeland centre standing in ten acres of fine woodlands, commanding magnificent views of Lake Windermere and the mountains. It is situated just off the main Ambleside road on the way to Troutbeck and Patterdale. The house accommodates forty six guests and has hot and cold water and gas fires in the bedrooms. Dancing, table tennis. Boating and bathing may be enjoyed at Ambleside and Bowness.

OPEN: Easter: March 29 to April 5; then  
Whitsuntide: May 19 to Oct. 6, and Christmas.

CHARGES: Easter 22/- per day (4 days minimum)  
Season May 19—June 29 £7/0/0 per week  
June 30—Sept. 7 £7/7/0 per week  
Sept. 8—Oct. 6 £7/0/0 per week

POSTAL ADDRESS: F.I.A., "Chapel Ridding,"  
Windermere, Westmorland

TELEPHONE: Windermere 212 Garage: 2/- per night

Optional Excursions will be arranged from the following:  
WANSELL PIKE, TROUTBECK, CONISTON, HAWKSHEAD,  
KIRKSTONE PASS, KILNSHAW, SNARKER PIKE, THE  
EIGHT LAKES TOUR, LANGDALE PIKES, BLEA TARN, LAKE  
WINDERMERE, WATERHEAD, BOWNESS, HELVELLYN,  
THIRLMERE, LOUGHRIGG BROW, GRASMERE.

Approximate cost 45/- per week



"BEECHWOOD COURT"

## Harrogate

"Beechwood Court" stands in its own grounds, and is situated in one of the most pleasant parts of Harrogate, one minute from the famous Valley Gardens and world-renowned Stray and ten minutes from the centre of the town and also on a local bus route. There are eighty bedrooms with hot and cold water, gas or electric fires or central heating, lift, spacious lounges, large hall, table tennis, Tennis courts and golf links near-by. Harrogate is well known as a Spa and caters for visitors all the year round. Orchestras in the Valley Gardens and Royal Hall, Sun Pavilion, Theatre

OPEN: All the year round  
POSTAL ADDRESS: "Beechwood Court," Cold Bath Road,  
Harrogate

TELEPHONE: Harrogate 3386 Management  
(2 lines) " 321911 Visitors

Garage: 2/6 per night  
CHARGES: October—April (inclusive) 22/- per day  
(excepting Christmas)  
May—September (inclusive) 25/- per day

These charges apply to bookings for two nights and over. For shorter periods a charge of 20/- per night for Bed and Breakfast will be made and other meals taken by arrangement at extra charge.

Bed and Breakfast only 20/- per night  
EASTER WEEK (4 days minimum) 25/- per day  
Additional days 22/- per day

At Christmas and Easter, a Host and Hostess will be in residence to arrange a programme of excursions and entertainments.  
MEALTIMES: Breakfast 8-30 a.m. to 9-0 a.m. Lunch 1-0 p.m.  
Afternoon Tea 4-0 p.m. Dinner 6-30 p.m. to 7-0 p.m.

Local Excursions can be arranged to visit the following:  
BOLTON ABBEY, FOUNTAINS ABBEY, STUDLEY ROYAL,  
KNARESBOROUGH, RIPON, HAREWOOD HOUSE, ILKLEY,  
YORK, YORKSHIRE DALES TOUR, NEWBY HALL, ETC.  
Spring interior mattresses in all bedrooms